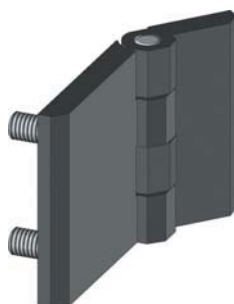


PLOCHÝ ZÁVĚS

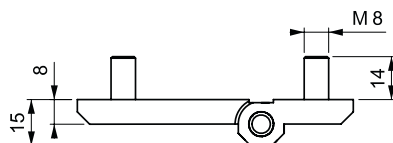
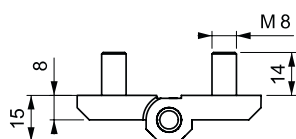
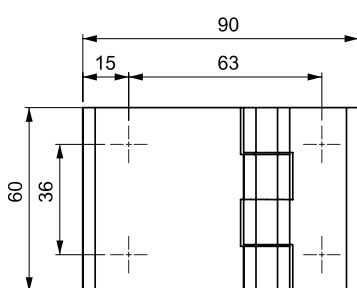
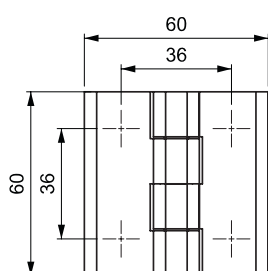
399



V : 1



V : 2



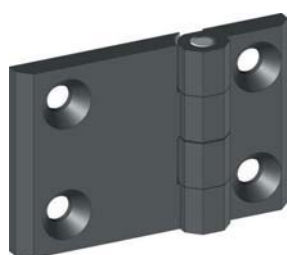
MATERIÁL

TĚLO: Slitina DIN-EN
1774-ZnAl4Cu1
KOLÍK: Nerezová ocel (304)

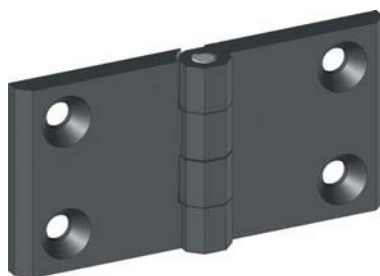
POVRCH

TĚLO: Chrom nebo černý lak

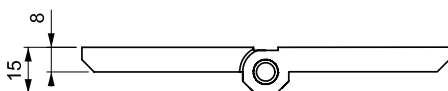
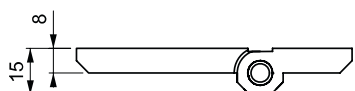
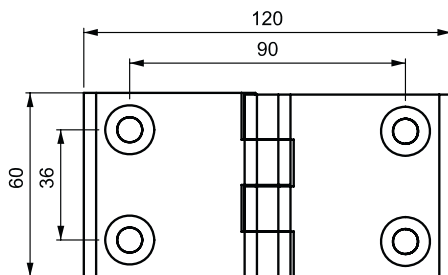
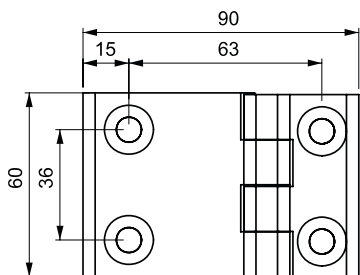
Úhel otevření

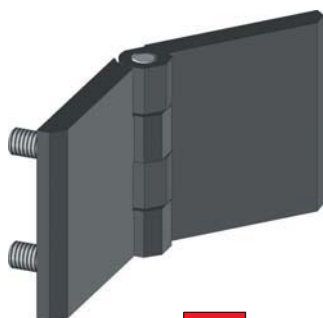


V : 5

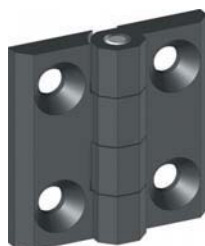


V : 6

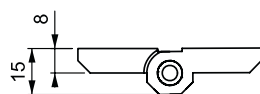
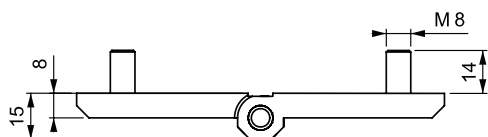
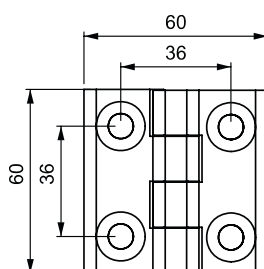
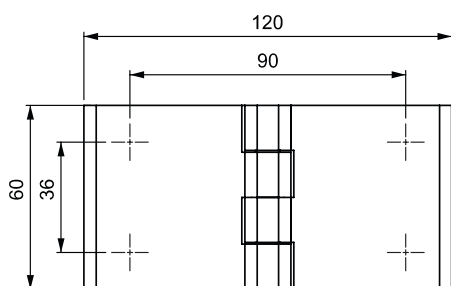




V : 3



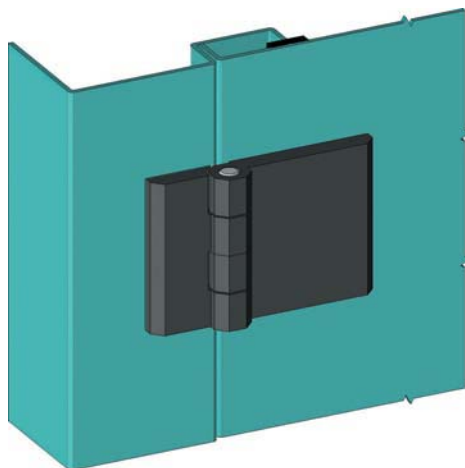
V : 4



OBJEDNACÍ ČÍSLO

399 **M** - **F** - **V**
 ČÍSLO MATERIÁL POVRCH PROVEDENÍ

ČÍSLO	MATERIÁL	M	POVRCH	F
399 1-1-V	Slitina (ZnAl4Cu1)	1	Chrom	1
399 1-2-V			Černý lak	2



PLOCHÝ ZÁVĚS

399



MATERIÁL

TĚLO: Slitina DIN-EN
 1774-ZnAL4Cu1
 KOLÍK: Nerezová ocel (304)

POVRCH

TĚLO: Chrom nebo černý lak

Úhel otevření

